

# 5 MM OPEN ENDED

## POWERHOUSE™ HTD® BELTS

Standard Widths:

9 mm, 10 mm, 15 mm, 25 mm, 50 mm



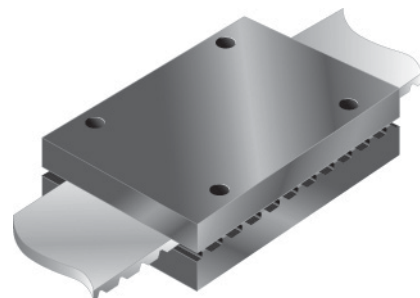
Part Number	Width	Net Weight (lb/ft)	Maximum Continuous Length	Construction	Reinforcements
LL5M09	9 mm	.01	300 feet	Neoprene	Fiberglass
LL5M15	15 mm	.04	185 feet	Neoprene	Fiberglass
LL5M25	25 mm	.05	100 feet	Neoprene	Fiberglass
LL5M10US	10 mm	.03	328 feet	Polyurethane	Steel
LL5M15US	15 mm	.04	328 feet	Polyurethane	Steel
LL5M25US	25 mm	.07	328 feet	Polyurethane	Steel
LL5M50US	50 mm	.14	328 feet	Polyurethane	Steel

Do you need multiple delivery dates throughout the year? Contact our sales engineers to discuss blanket order options to take advantage of quantity discounts. Blanket orders satisfy recurring requirements, save time and reduce administrative costs by eliminating repetitive purchase orders, permit purchasing to leverage buying power through volume purchasing, and reduce procurement lead time, especially for parts not commonly held in stock.

Blanket orders save you from having to hold greater than necessary amounts of stock, save you the trouble and expense of processing frequent purchase orders, and reduce the lead time required for recurring orders.

## 5 MM POWERHOUSE™ HTD® CLAMPING PLATE

Standard Widths:  
9 mm, 15 mm, 25 mm  
Aluminum



Part Number	For Belt Width (mm)
CP-5M-09	9 mm
CP-5M-15	15 mm
CP-5M-25	25 mm